

Asst. Prof. Sompid Samipak



Plant genetic engineering, cell manipulation and DNA marker application in cucumber

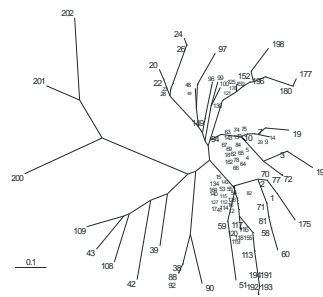
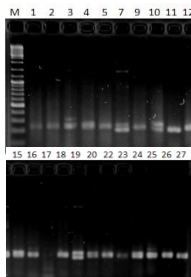
*Jatropha curcas*

Main problem: Low yield, too few female flowers per plant. Use genetic engineering to increase number of fruits.



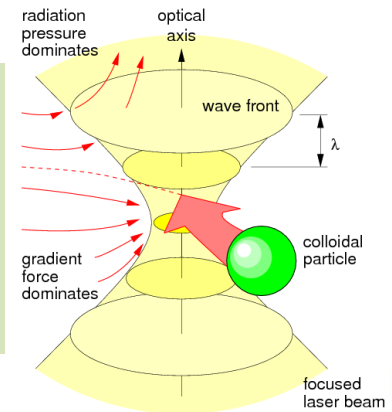
*Cucumis sativus*

- a) Genetics diversity study
- b) Genome mapping



Optical tweezers in biological application

Optical tweezers is a highly focused laser beam that can move an object. Research focuses on trapping plant cells.



Use microsatellite marker to assess the genetic variation of cucumber in Thailand and to create a genetic map.

Contact: [ssamipak@gmail.com](mailto:ssamipak@gmail.com)