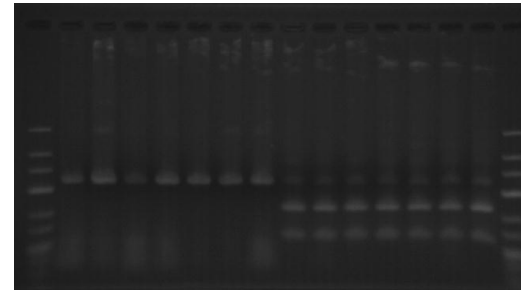
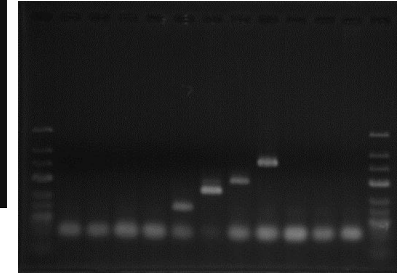
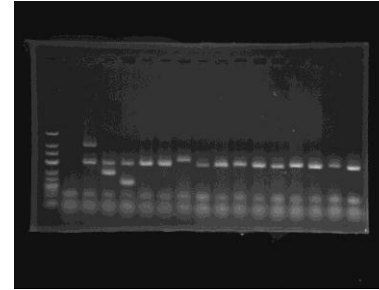


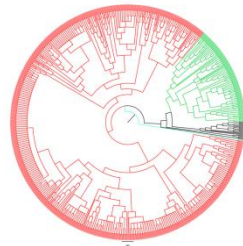
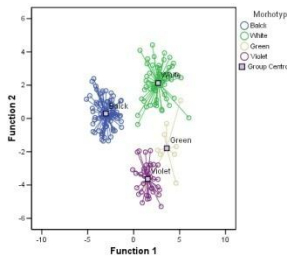
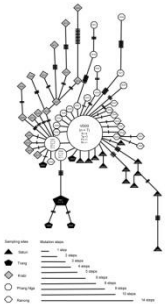


Development of Species-Specific Markers

Molecular markers such as multiplex PCR and nucleotide sequences of mitochondrial DNA (mtDNA) have been widely accepted for identification of animal species. The markers were applied to several different purposes e.g. food safety, conservation and law enforcement. Therefore, a number of animal species both vertebrate and invertebrate are targets to identify their effective species-specific markers.



Molecular systematic and Evolution



Population structure, historical demography, phylogenetic relationship and lineage tracing are important information for genetic resource management. Nucleotide sequences of mtDNA were applied to study population genetic, taxonomy and phylogeny of animal species native to Thailand.